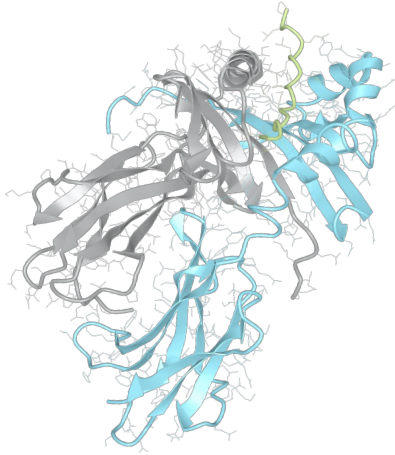


# Product datasheet



## sHLA– DRB3\*03:01bio DRA\*01:01bio

DRB3\*0301, DRB30301, DRB3\*03, DRB03, DR52  
DRA\*0101, DRA0101, DRA\*01, DRA01

<b>Serological Name</b>	DR52
<b>Peptide Load</b>	Endogenous
<b>Modification</b>	Unmodified
<b>Conjugation</b>	Biotin
<b>SKU</b>	DRB30301bio

### Product Description

<b>Allele Name</b>	<p>DRA*01:01</p> <p>DRB3*03:01</p>
<b>HLA Class</b>	HLA Class II
<b>HLA Gene Locus</b>	HLA-DR
<b>Alternative Allele Name A Chain</b>	DRA*0101, DRA0101, DRA*01, DRA01
<b>Alternative Allele Name B Chain</b>	DRB3*0301, DRB30301, DRB3*03, DRB03, DR52
<b>Description</b>	Recombinant, truncated Class II soluble Human Leukocyte Antigen (sHLA), naturally folded and glycosylated, loaded with endogenous peptides.
<b>Serological Name</b>	DR52
<b>Serological Split</b>	-
<b>Allele Frequency [World Population]</b>	
<b>A chain</b>	-
<b>B chain</b>	-

### Associated products

[DRB30301](#)  
[DRB30301pe](#)

## Product Specification

Product name	HLA-DRB3*03:01bio
HLA Species	Human
Host Cell Line Species	Mouse
Clone Designation	
Tail Specification	ZP
Peptide Load	Endogenous
Modification	Unmodified
Conjugation	Biotin
Complexity	Monomer
Protein Format	Recombinant, truncated, zipper-stabilized, soluble, non-modified, biotinylated, endogenously loaded
Storage Temperature	4°C (This product should be stored undiluted)
Form	Liquid
Concentration	300.0 µg/µl
Formulation	PBS/0.02% Sodium Azide
pH	7.4
Purification Method	Affinity Chromatography
Grade	Research Use Only [RUO]
Authentication Verification	Sequence Based Typing

## Protein Sequences

Alpha Chain Sequence	<p>IKEEHVIIQA EFYLNPDQSG EFMDFDGDGE IFHVDMASSE TVWRLEEFGR FASFEAQGAL          ANIAVDKANL EIMTKRSNYT PITNVPPEVT VLTNSPVELR EPNVLICFID KFTPPVVNVV          WLRNGKPVTT GVSETVFLPR EDHLFRKFHY LPFLPSTEDV YDCRVEHWGL DEPLLKHWEF          DAPSPLPETT EVDGGGGGAQ LEKELQALEK ENAQLEWELQ ALEKELAQ</p>
Beta Chain Sequence	<p>GDTRPRFLEL LKSECHFFNG TERVRFLERY FHNQEEFVRF DSDVGEYRAV TELGRPVAES          WNSQKDLLEQ KRGQVDNYCR HNYGVVESFT VQRRVHPQVT VYPAKTQPLQ HHNLLVCSVS          GFYPGSIEVR WFRNGQEEKT GVVSTGLIHN GDWTFQTLVM LETVPRSGEV YTCQVEHPSV          TSPLTVEWRA RSESAQSKVD GGGGAQLKK KLQALKKKNA QLKWKLQALK KKLAQ</p>

## Related Products

[DRB30101bio](#)  
[DRB30202bio](#)  
[DRB11101bio](#)  
[DRB11501bio](#)

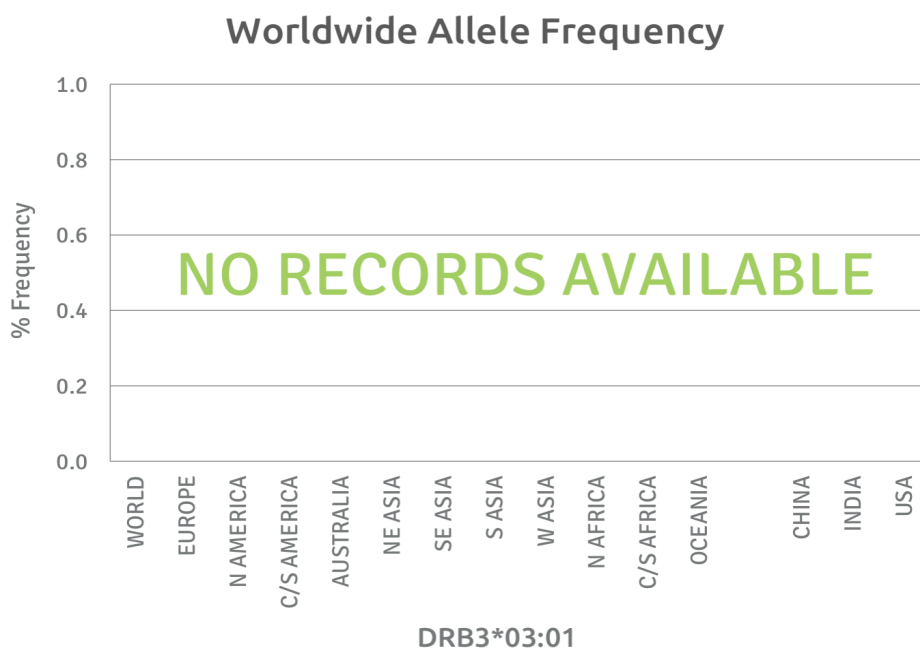
## Applications

HLA Sandwich ELISAs  
HLA Direct ELISAs  
HLA-Sera Antibody Assays  
HLA Controls in ELISA Assays  
HLA Assay Standards  
HLA Blocking Assays  
HLA Neutralizing Assays  
HLA Competition Assays  
HLA Bead Assays  
HLA Immunization Procedures

## Recommended Antibodies

L243

## Allele Frequency



Please note:

ALL PRODUCTS ARE FOR RESEARCH USE ONLY. NOT FOR COMMERCIAL USE IN DIAGNOSTIC PROCEDURES.  
For more information, please visit our Policies section on our website. For licensing inquiries, please contact

[licensing@hlaprotein.com](mailto:licensing@hlaprotein.com)

 HLA Protein  
PURE PROTEIN LLC

Eplet Assignments

DRB3\*03:01

Eplet	Polymorphic Residues	Antibody Reactivity
4R	4R	Yes
13SE	13S14E	
16H	16H	
25R	25R	Yes
26F	26F	
31F	31F	
31FH	31F32H33N	
32H	32H33N	
33N	33N	
37F	37F	
37FV	37F38V	
38V	38V	
40F	40F41D	
47Y	47Y	
47YR	47Y48R	
57V	57V58A60S	Yes
58A	58A	
67LQ	67L 70Q	Yes
70Q	70Q	
70QK	70Q71K	
70QQ	70Q73G74Q	
71K	71K	
73G	73G	
73GQ	73G74Q	
77N	73G77N78Y	Yes
78Y	78Y	
85V	85V	
85VV	85V86V	
86V	86V	
96H	96H	
98Q	96H98Q120S	Yes
104A	104A	Yes
104AK	104A105K	
108P	105K108P	
112H	112H	
120S	120S	
140TV	140T142V	
149H	149H	
180V	180V	
180VTP	180V181T183P	
181T	181T	
189R	187E189R	